

# Buff Point Dog Park Engagement Summary



Between 12 November and 10 December 2025, Council sought community feedback on the location of the Buff Point Dog Park.

The community could share their feedback by completing the online poll or writing to Council via email or post. Options in the poll included:

- Option 1 – Relocation within Buff Point Oval
- Option 2 - Relocation to Edgewater Park

Most respondents supported option 2, relocating the dog park to Edgewater Park.

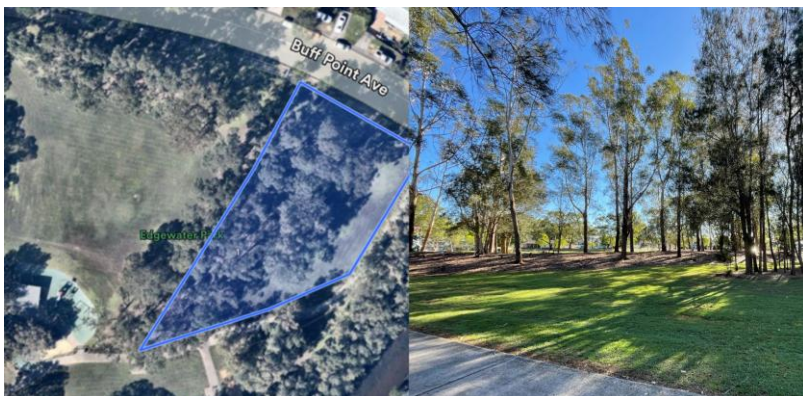
## Option 1 - Relocation within Buff Point Oval

Relocation within Buff Point Oval with a smaller footprint - shown in aerial image below.



## Option 2 – Relocation to Edgewater Park

Located on Narambi Rd, Buff Point 1.3km away, with toilets and parking



## How you connected



A total of **4,122** online poll votes received from **324** individuals



**8** written submissions received



Your Voice Our Coast **5,933** views



Flyers distributed to **1,410** properties in Buff Point



Media release issued to **120** contacts (online, radio, TV and print media). Picked up by **5** different channels.



eNews story - Delivered to **7,008**



Poster installed at Buff Point Oval and Edgewater Park



Facebook and Instagram – **7,644** people were reached, generating **210** link clicks and **43** reactions



Meta paid – **5,221** people were reached, generating **139** landing page views, and **15** reactions



Coast Connect print - Reach of **62,000+**

# Online Poll

Most respondents **supported relocating the dog park to Edgewater Park**. Due to the poll tool's functionality and strong interest in the topic, participants were able to vote multiple times. While the poll recorded 4,122 votes, these came from 324 unique IP addresses, meaning the poll saw multiple votes from multiple individuals for both options.

**Figure 1** shows votes from unique contributors: 84% (n=272) favoured Edgewater Park, while 16% (n=52) preferred Buff Point Oval.

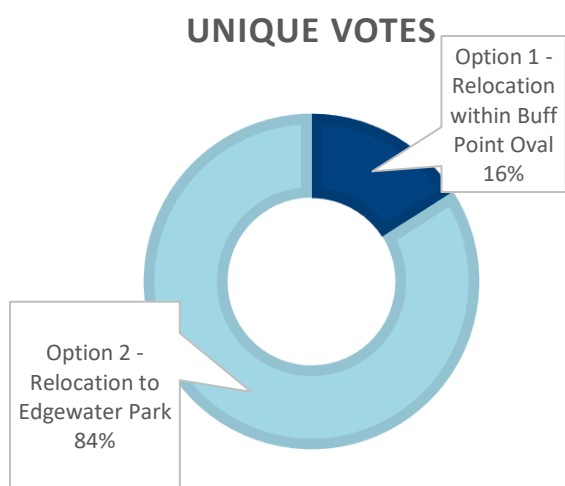


Figure 1: Unique IP address votes on Your Voice Our Coast Poll, 12 November to 10 December, 324 responses

**Figure 2** shows total votes: 67% (n=2,773) supported Edgewater Park, and 33% (n=1,349) supported Buff Point Oval.

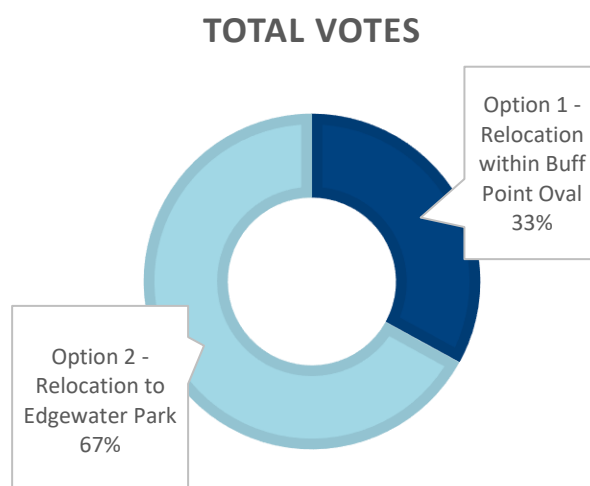


Figure 2: Total votes on Your Voice Our Coast Poll, 12 November to 10 December, 4,122 responses



## Written submissions

Of the four written submissions, key concerns included the suitability of Edgewater Park and the potential for change in use. Others suggested design improvements, such as incorporating seating within the park.

### Concerns for Edgewater Park



Key issues included amenity impacts from dog waste and odour, and the potential loss of open green space, which could change the experience for families using the playspace, picnic area, and shared pathways. Some also questioned whether this move would limit future development opportunities for the playspace and broader area.

Environmental concerns were highlighted, such as poor drainage and limited sunlight creating muddy conditions. Others felt Edgewater Park is unsuitable for dogs due to its high level of activity, which may lead to increased dog anxiety and more fights.

Submitters also raised questions about sporting use at the current location, including whether Buff Point Oval users will transition to the new \$6 million Colongra Bay Sporting Complex, and if so, whether relocating the dog park would unnecessarily reduce space at Buff Point.

### Design suggestions



A suggestion was made for wherever the new park is, the design should include seating inside the park for social and accessibility reasons. Other ideas of ensuring water is provided inside the park and an undercover area too.

Temporary parking suggestions to increase parking availability of Buff Point Oval, including where the old canteen was or the unused area near Karangul Cres.

## Social media sentiment

The social media sentiment echoed similar themes as written submissions. Of the 55 interactions majority (85%) were neutral, with smaller proportions that were negative (10%) and positive (5%). Commentary included calls for

- Amenities (27) such as internal taps, seating, covered areas, and full fencing.
- Location & size (13), with a preference to keep current site, concerns about smaller footprint and proximity to play areas
- Maintenance & quality (7), concern for upkeep, turf, signage, and broader park maintenance



## Council's response

Topic	Council's response
<p>Majority of respondents supported relocating the dog park to Edgewater Park.</p>	<p>Council considered this level of support when making the final decision to relocate the dog park to Edgewater Park.</p> <p>The proposal to relocate the dog park is part of Council's broader vision for Buff Point Oval and aligns with the Draft Dogs in Open Space Action Plan (2023–2033).</p> <p>Over the past three years, Council has invested approximately \$2 million in upgrades to Buff Point Oval, including drainage, irrigation, lighting, and a modern amenities building, with plans for a formalised car park.</p> <p>Relocating the dog park will allow better use of space for sporting and recreational needs while ensuring a safe, accessible, and enjoyable off-leash area for dogs and their owners. Edgewater Park is being considered because it meets key criteria in the Action Plan, such as proximity to toilets, parking, and accessible paths.</p>
<p>Concerns for amenity impacting current users at Edgewater Park due to dog waste &amp; odour</p>	<p>Specific dog waste bins and bags are not provided as Council encourage dog owners to take their dogs waste with them and dispose in public or private bins, with public bins emptied with increased frequency during warmer months to manage odour and hygiene. Council enforces responsible pet ownership under the Companion Animals Act and will continue education and compliance measures.</p> <p>The site at Edgewater Park may also include:</p> <ul style="list-style-type: none"> <li>• clear buffers from the play and picnic area (fencing/landscaping)</li> <li>• gates and paths oriented away from the playground</li> <li>• prominent "pick-up" signage</li> <li>• regular Ranger patrols and education</li> <li>• nearby public bins serviced more frequently in warmer months.</li> </ul>
<p>Edgewater Park concerns: potential impacts on long-term development opportunities, changes to the park's current use as a family playspace</p>	<p>Council agrees it is a valued community space. With the dog park being relocated, a large portion of green space will remain, allowing for continued use by families, cyclists, and walkers. These areas are community land, and that is why this proposal has been put out for consultation, to ensure the community has a voice in shaping these spaces.</p>

<p>Sporting usage of current location</p>	<p>Council’s proposal is based on several factors, including the need to balance open space for recreation with the growing demand for sports facilities across the Central Coast. Additional green space is required to manage the increasing participation in organised sport, and sportsgrounds are allocated in line with Council’s Sportsground Allocation Policy which considers multiple criteria to ensure fair and effective use of facilities across the region.</p> <p>Council has invested approximately \$2 million in upgrades to the Buff Point site, including:</p> <ul style="list-style-type: none"> <li>• New drainage and irrigation systems</li> <li>• Improved lighting</li> <li>• A modern amenity building</li> <li>• Plans for a formalised car park</li> </ul> <p>These improvements are designed to meet the growing needs of local sporting clubs and the wider community. Buff Point Oval is currently home to Northlakes Rugby Union Club, which relocated from Slade Park because Slade Park is unsuitable as a seasonally allocated venue. Its proximity to the lake and minimal fall means effective drainage works are unachievable and would remain ineffective during high tides or elevated groundwater. Installing a drainage system could also lead to saltwater backflow, further damaging turf through saltwater intrusion.</p> <p>As a result, Slade Park will be taken offline as a seasonal allocated venue and will remain available as a training overflow option and open space.</p>
<p>Environmental concerns</p>	<p>We acknowledge concerns about drainage, flood risk, sunlight, odour, and proximity to other park uses. Council will only proceed where environmental performance, safety, and amenity can be demonstrated through our assessment processes.</p> <p>Key Points</p> <ul style="list-style-type: none"> <li>• Drainage &amp; Flooding: Site-specific assessments will confirm suitability. If risks cannot be mitigated, the site will not proceed. Where viable, design will include proven stormwater controls and layout to maximise sunlight and avoid low-lying areas.</li> <li>• Odour Management: Owner obligations under the Companion Animals Act remain central. Council will support this through signage, education, and increased bin servicing in warmer months. Design will use free-draining surfaces and buffers to reduce odour.</li> <li>• Buffers &amp; Safety: Any concept will include fencing, gated entries, and orientation away from playgrounds and shared</li> </ul>

	<p>paths. Layout may include zones and sightlines to minimise conflicts.</p> <ul style="list-style-type: none"> <li>• Compliance: Rangers will continue proactive patrols and education to enforce responsible pet ownership.</li> </ul>
Parking suggestions	<p>Council already has plans for a formalised car park at Buff Point Oval.</p> <p>Council will consider these ideas throughout the process, as near-term parking solutions and staging that support dog park users during and after any changes.</p>
Edgewater Park's high activity makes it unsuitable for dogs, causing anxiety and more fights.	<p>The aim is to ensure the dog park remains safe, accessible, and enjoyable while balancing the needs of sporting and recreational users. This feedback will be included in the assessment process.</p>
The design should include seating inside the park.	<p>The social side of our off-leash areas matters, and we appreciate how seating supports both people and dogs.</p> <p>Seating and water access is anticipated for each site but will be dependent upon the total relocation costings against budget.</p>

## What's next?

Council has reviewed all feedback received during the exhibition period. Work is now progressing to relocate the dog park to **Edgewater Park**, with the detailed schedule to be confirmed. Construction of the new facility is expected to be completed **before the end of the year (2026)** and will include water access, seating and shade.

Find out more and stay up to date at  
[www.yourvoiceourcoast.com/buff-point-dog-park-relocation](http://www.yourvoiceourcoast.com/buff-point-dog-park-relocation)