



Gosford Regional Gallery

# Central Coast Council

## **Disability Inclusion Action Plan**

2026-2030

Central  
Coast  
Council



# What's in this Plan?

Central Coast Council's Disability Inclusion Action Plan	3
How people treat others	6
Making places easy to use	8
Employment	11
Using Council services	15
Find out more	18

# About this Plan



This plan is about Central Coast Council's Disability Inclusion Action Plan.

We call it **the Plan**.



The Plan explains what Council will do to:

- Make the Central Coast accessible and inclusive
- Help people with disability join in
- Make it easier to get help and use services.

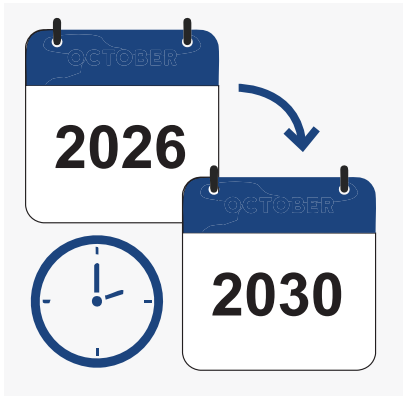


We wrote this Plan in an easy to read way.



You can ask someone to help you read this Plan.

# About the Plan

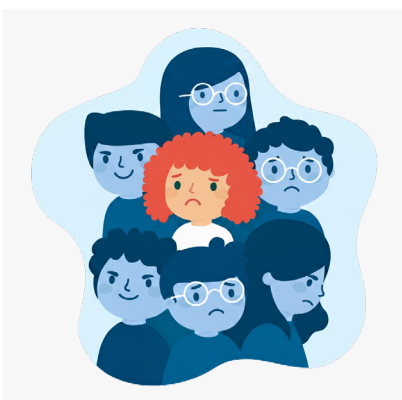


The Plan is for 4 years, from 2026 to 2030



Council made the Plan with people with disability.

We also talked to families, carers and local disability groups.



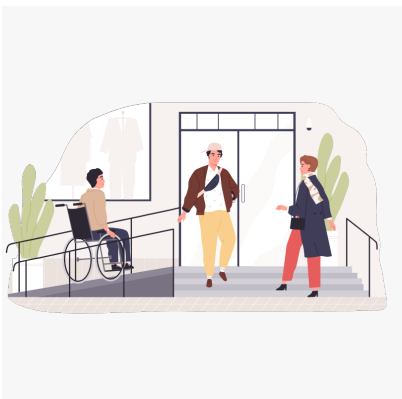
People told us what makes it hard to join in when you have a disability and how to make things better.

## The Plan is about 4 main things:



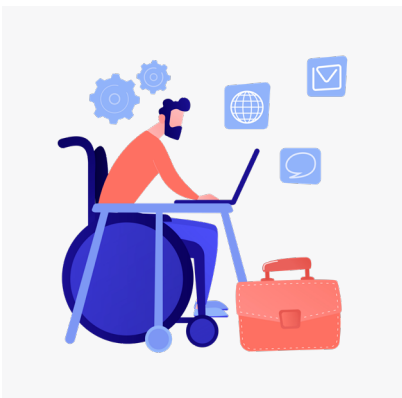
**1.**

**How people treat others** – helping everyone understand disability.



**2.**

**Making places easy to use** – making information, services, places and activities accessible.



**3.**

**Employment** – helping people with disability to get good jobs.



**4.**

**Using Council services** – making Council information and services easy to use.

# How people treat others

## What this means



- Help people understand disability.
- Help people treat everyone with respect.

## What we heard

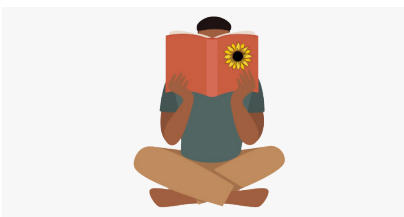
People with disability told us:



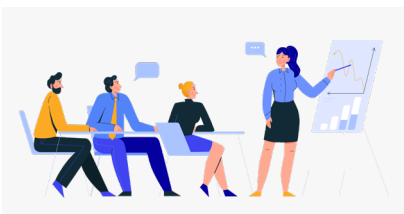
Sometimes they are treated badly.



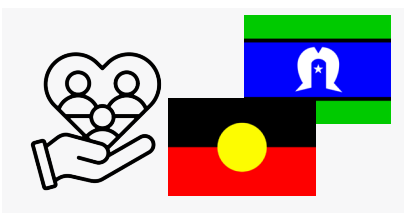
Some disabilities cannot be seen, like autism or mental illness.



They want to see more pictures and stories about people with disability.



Council workers and local businesses need training to understand disability.



We need better services for Aboriginal, Torres Strait Islander and multicultural people.

## What Council will do

Council will:



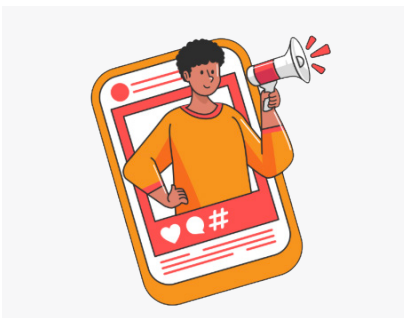
Help people learn about disability.



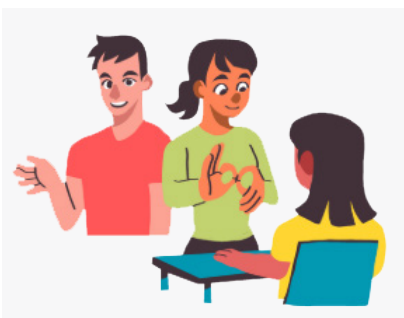
Teach Council workers and local businesses how to include people with disability.



Remind people that toilets and parking spaces for people with disability are only for people with disability.



Use more positive pictures and stories about people with disability.



Hold events to help everyone understand disability.

# Making places easy to use

## What this means

Make it easier for people with disability to:



Go to places



Join in activities



Go to events.

## What we heard

People with disability told us:



It should be easier to go to the beach, lake or bush.



Footpaths should be safe and go to the right places.



We need more toilets that are easy for people using a wheelchair.



## What Council will do

Council will:



Make it easier to enjoy beaches, parks and bushland.



Add beach mats and wheelchairs so people with disability can get to the water.



Share information about easy-to-use beaches online and in newsletters.



Fix and upgrade footpaths, toilets and parking.



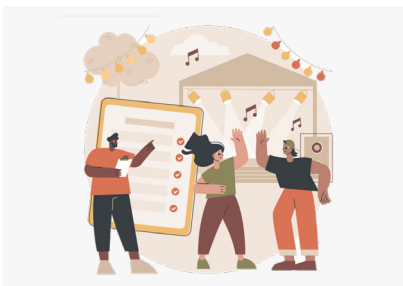
Build play spaces that everyone can use.



Add picnic tables and charging points for mobility devices.



Check parking spaces and add more where needed.



Make Council events easy for everyone to join.



Teach event staff how to plan activities that people with disability can go as well



Work with local businesses to make services easier to use.



Plan and design spaces for everyone to use

# Employment

## What this means

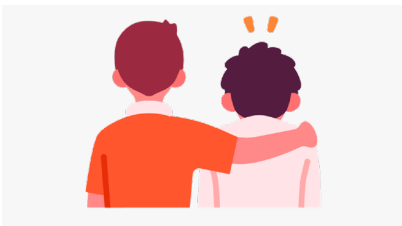
Help people with disability to:



Find jobs



Learn skills



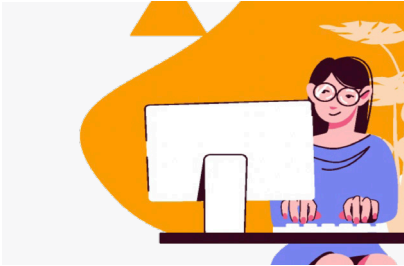
Get support at work.

## What we heard

People with disability told us:



Employers should give us a chance to work.



Employers should make changes and give help when needed.

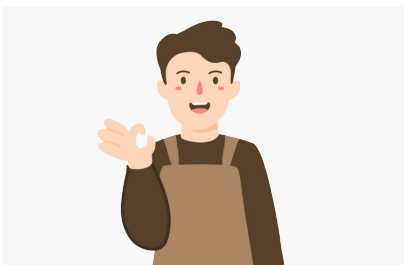


There should be different types of jobs:

- First jobs
- Skilled jobs
- Leadership jobs.



People with disability want chances to learn new skills.



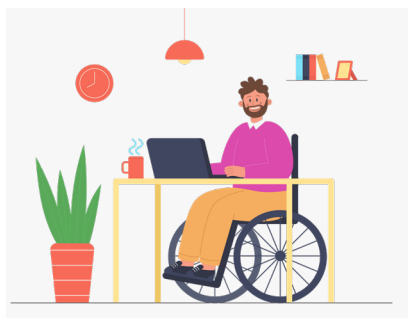
Some want to start their own business.

## What Council will do

Council will:



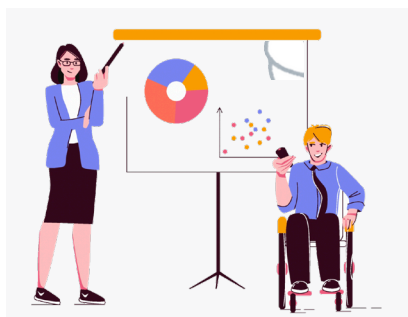
Make it easier to find out about jobs and apply.



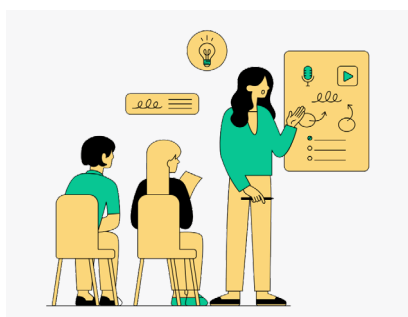
Support Council workers with disability.



Give training so workers can learn new skills.



Offer work experience for people with disability.



Work with schools, TAFE and job services to help people get jobs.





Teach Council managers how to support workers with disability.



Give simple information to local employers about:

- Why hiring people with disability is good
- How to support workers with disability.

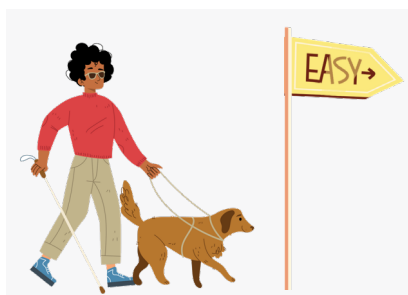
# Using Council services

## What we heard

People with disability told us:



Council should have workers who understand disability.



People need to know which places are easy to use.



Council information should be:

- Easy to read
- In Auslan
- In simple formats, like videos or big print.



Information about emergencies should be clear.



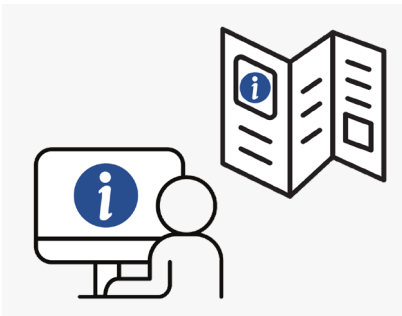
People want more chances to speak up.

## What we heard

People with disability told us:



Keep working with its Access and Inclusion Group (a group of people with disabilities who help Council)



Share clear information online and in print.



Make Easy Read and Auslan versions of important documents.



Give simple information about events and places, with pictures and maps.



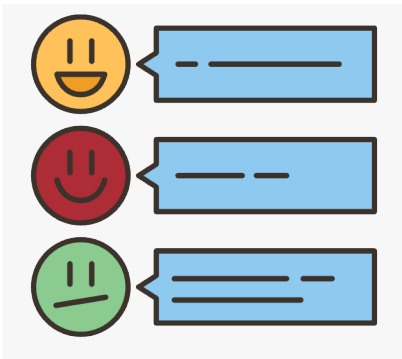
Make it easy to tell Council what you think.



Teach Council workers how to make information easy to understand.



Make the Council website easier to use.



Give people more chances to have their say.



Explore options for Auslan interpreters at key meetings and events.

# Find Out More



If you want to find out more about this plan

- Call Council on (02) 4306 7900
- Email Council at [ask@centralcoast.nsw.gov.au](mailto:ask@centralcoast.nsw.gov.au)



Or you can call Central Coast Council using:

- National Relay Service/TTY: 1 3 3 6 7 7
- Speak and Listen: 1 3 0 0 5 5 5 7 2 7



The logo for Central Coast Council is a white circle containing the text "Central Coast Council" in a dark blue, sans-serif font. The text is arranged in three lines: "Central" on the top line, "Coast" on the middle line, and "Council" on the bottom line.

Central  
Coast  
Council