

Umina Regional Playspace Renewal Engagement Summary



Between Monday 10 November and Sunday 21 December 2025, Council sought feedback for a proposed refresh of the popular playspace at the Peninsula Recreation Precinct in Umina.

You told us how you want to jump, climb, swing and slide in the renewed space. Whether you're a local, a visitor, young or young-at-heart, your ideas are helping us create a vibrant, inclusive and fun playspace for everyone.

Community members were invited to share feedback by attending the in-person pop-up event, dropping a comment on the interactive map and reading the FAQ section on Your Voice Our Coast to address common queries. Submissions could also be sent via email or post.

Overall, the proposed changes to the Umina Regional Playspace were mostly supported by participants in the online map and at the pop-up event. An in-depth analysis of the feedback we received is in the pages that follow.



How you connected



A total of **427** submissions received on our interactive map



1 pop up on-site locations with **15** attendees



Your Voice Our Coast **2,218** views and 1,439 visitors



Temporary signage at location, with QR code to YVOC scanned **186** times



Organic social media – reached **32,789**, generating **220** reactions



Meta paid - Reach of **27,860** and **74,498** impressions



Media release – Delivered to **118** (online, print, radio)



eNews - Delivered to **2,992** addresses



Coast Connect print - Delivered to **60,000**

Engagement Results

Overall, the proposed changes to the Umina Regional Playspace were mostly supported by participants in the online survey and at the pop-up event.

Overall park commentary

Maintenance and cleanliness

Concerns about the current state of the park, with calls for a thorough clean-up and better upkeep. Suggestions from the community and local business owners to increase maintenance, commit to public toilet upgrades and improvements, conduct sewer upgrades and improvements, pigeon control and regular cleaning of their mess, more lighting and shade and more security.

"Glad to hear it's getting a tidy up."

"Clean up the entire area, the tables etc are filthy and gross! All that concrete walls etc are gross, the climbing wall is a hazard."

"We do not need new infrastructure, we need a sustainable maintenance plan to maintain existing infrastructure. We want to see more Park staff and more local employment in park and garden maintenance."

Mixed opinions

While most feedback was positive, some expressed doubts about cost, vandalism, and necessity.

"Things like this usually get used improperly or vandalised therefore available for use by the people that it's aimed for."

"Probably waste of money."

"Happy as it's well loved and utilised, however I would think if this much investment is completed then a holistic master plan could have been completed."



Area 1

Area 1 includes the circular bike path and bike roller bridge, which is proposed to be replaced with a mammoth 360-degree nest swing.



Participants in the online survey and at the pop-up event were asked to indicate their level of support for the proposed changes to Area 1, selecting from 'happy with the change', 'neutral/unsure', or 'unhappy with the change'. Area 1 received the most mixed opinions out of the four areas. Figure 1 below presents the percentage distribution of respondents' answers.

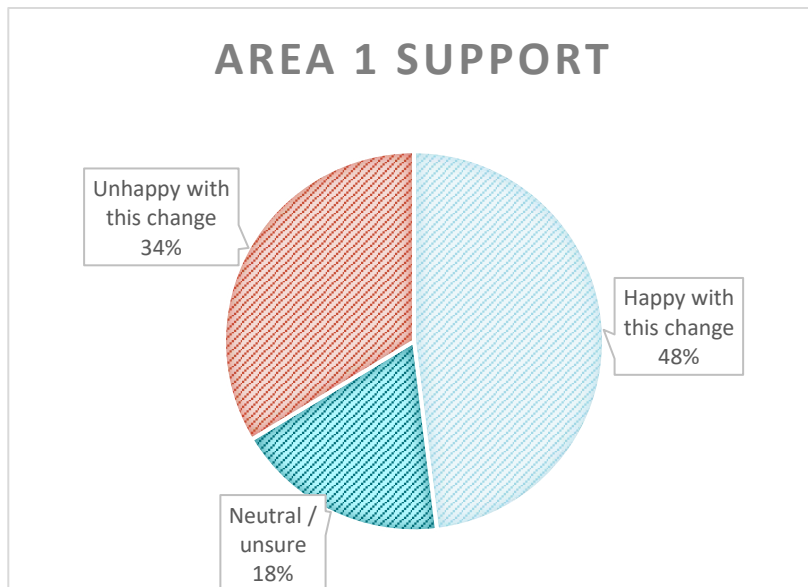


Figure 1: Support for proposed changes to Area 1 Source: Social map on Your Voice Our Coast, 10 November to 21 December, 104 responses

Respondents were asked to identify whether they are a parent, caregiver, youth worker, or an individual responsible for children, and to specify the age groups relevant to their survey response. The following summary presents the number of individuals who selected each age group, along with their respective levels of support for the proposed changes in Area 1.

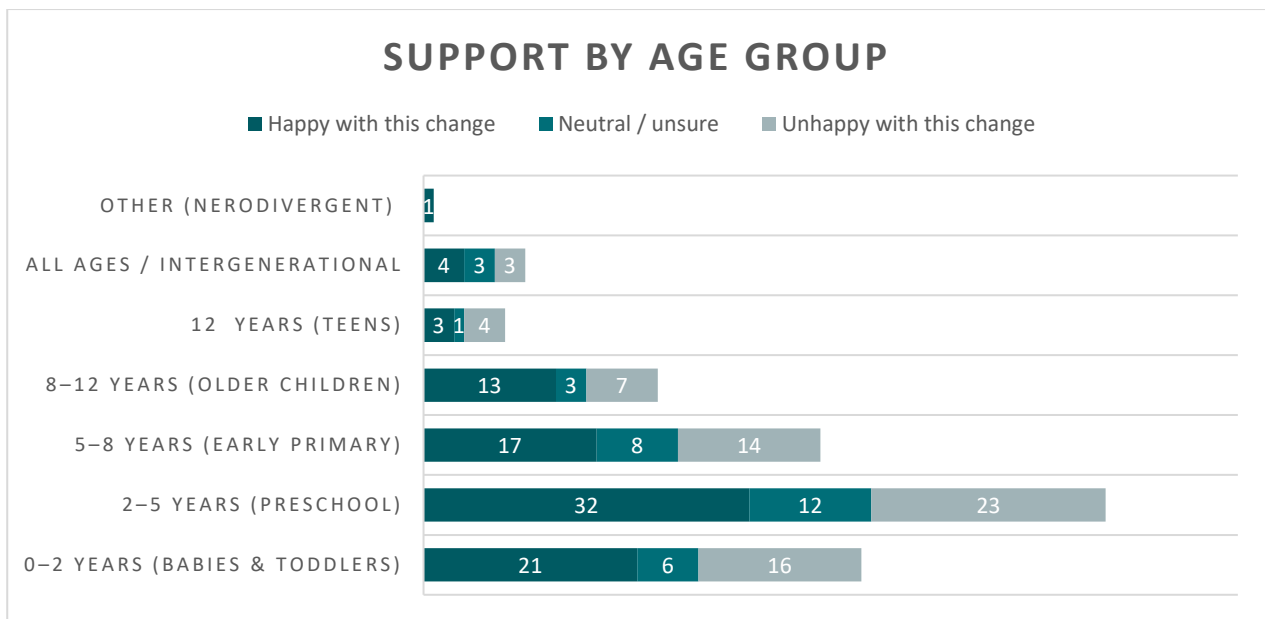


Figure 2: Support for proposed change to Area 1 by age group Source: Social map on Your Voice Our Coast, 10 November to 21 December, 190 responses. Note: as respondents could select multiple age groups, totals exceed 104.

The main themes of feedback regarding Area 1 are outlined below, accompanied by explanations and quotes gathered during the engagement process.

Keep the circular bike path (and/or enhance it)

Frequent references (n=21) to the bike path/roller as a valued, multi-user space for little kids learning to ride and for family gatherings. It's seen as inclusive and safer for younger children, and it supports simultaneous play.

"The circular bike path is used often", "Kids love to scoot and ride in a circle here", "...ideal for the smaller ones".

Concern about installing a single, large nest swing

Perceived as a space-inefficient, single-use item that limits the number of children playing at once, risks being hijacked by older kids, and may break or be vandalised (n=12).

"Restricts to single child play at one time", "A large space taken for only a few kids", "Net swings always break".

Strong appetite for water play/splash features

Multiple calls (n=9) for a splash park/water play - especially as a regional drawcard and an alternative for kids not going to the beach.

"Put a little splash park in...", "Please provide peninsula kids with a water park", "A splash area might be nice..."

Preserve picnic/BBQ and party functionality

The area's gathering role (picnics, birthdays, marquees) is valued (n=8); replacing with a large single structure could reduce flexible open space.

"Good space for families to have picnics/bbqs", "...children's party spot", "Will this reduce space avail?"

Maintenance and ground surface upgrades

The leaf litter and tired grass make the park drab, with requests (n=5) for soft fall/artificial grass and better ongoing maintenance.

"Leaf litter does not allow grass to grow well", "Soft padding would look better", "Always rubbish".

Make it unique / multi-user / creative

Desire for destination-quality and variety(n=5): obstacle courses, musical play, traffic-themed bike system, courts (e.g., pickleball), and fitness equipment.

"Replace with something that stimulates creativity or adventure", "Obstacle course type equipment", "What about... musical equipment", "Fitness equipment such as pull bar and monkey bar".

Duplication and local context

Some (n=3) say similar items exist nearby (Ettalong / 20 metres away); they want either improved existing assets or distinctive additions rather than duplicates.

"We already have similar 20 meters away", "We can go to Ettalong for this".

Safety, durability, and capacity concerns

References (n=5) to breakage, vandalism, safety hazards, and the need to accommodate many children at once.

"If it is vandalised... there will be nothing in that space", "Huge nest swing safety hazard", "These swings often break and don't get replaced".

Area 2

Proposed changes to Area 2 included renewing the internal concrete paths, paperbark tree, and old water refill station, installing an accessible swing and replacing the carousel with a wheelchair accessible version, adding double bay swings and pruning trees to improve visibility and safety.





Participants in the online survey and at the pop-up event were asked to indicate their level of support for the proposed changes to Area 2, selecting from 'happy with the change', 'neutral/unsure', or 'unhappy with the change'. Figure 3 below presents the percentage distribution of respondents' answers.

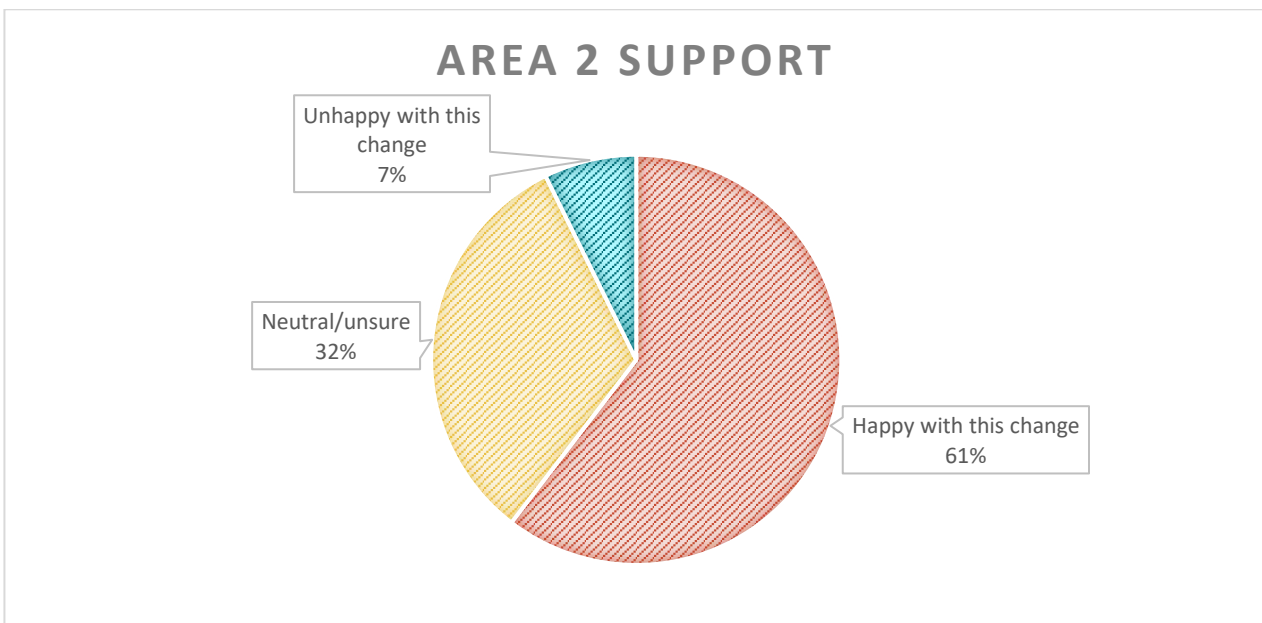


Figure 3: Support for proposed changes to Area 2 Source: Social map on Your Voice Our Coast, 10 November to 21 December, 96 responses

Respondents were asked to identify whether they are a parent, caregiver, youth worker, or an individual responsible for children, and to specify the age groups relevant to their survey response. The following summary presents the number of individuals who selected each age group, along with their respective levels of support for the proposed changes in Area 2.

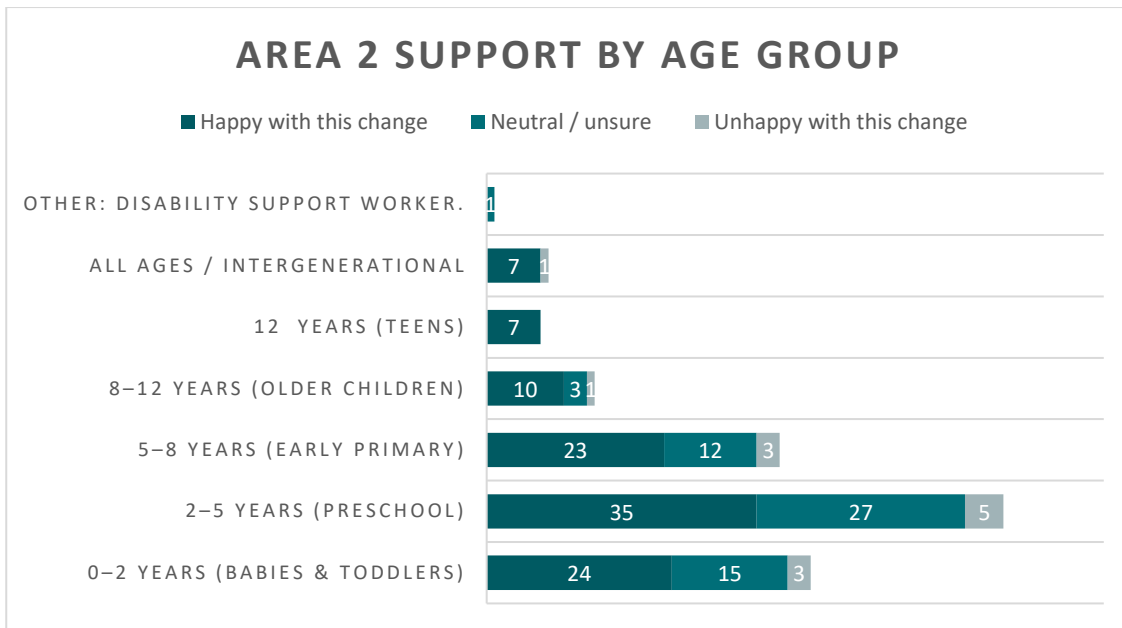


Figure 4: Support for proposed changes to Area 2 by age group Source: Social map on Your Voice Our Coast, 10 November to 21 December, 177 responses. Note: as respondents could select multiple age groups, totals exceed 96

The main themes of feedback regarding Area 2 are outlined below, accompanied by explanations and quotes gathered during the engagement process.

More swings and higher capacity

Respondents (n=12) report queues/waiting, want more than one swing set, and asked for baby swings/round net swings and shade.

"Three swings in a large space seems wasteful... please add more."

"More swings more of everything... 2 swings is not enough."

"An extra swing set would be wonderful as there always seems to be a queue."

Carousel/roundabout issues – fix or replace (10 comments)

Current carousel/roundabout is described as too heavy, broken, hard to use, and potentially unsafe; still valued if operable and safe.

"The current metal spin thing is too heavy..."

"Current Carousel is... a complete waste of space."

"Bearings are broken and it's impossible to push!"

"Can you add a seat to make it a bit safer for little ones?"

Broader equipment variety (9 comments)

Desire for slides, seesaw, climbing ropes, balance beams, (in-ground) trampolines, tree house, and fixing/repurposing voice pipes - to avoid a boring or under-utilised space.

"Considering the number of children... more swings and slides would be great!"

"Balance beams would be a nice addition."

"Replace the voice pipes... with a water channel or balance play."

Water play/splash features (7 comments; "water/splash" mentioned 10 times)

Desire for splash park/water channels/pumps that provide cooling in summer, sensory play, and a regional draw.

"Would love there to be waterpark in this space... to cool off and play."

"Add a splash park for the kids."

"Water play... small splash park."

Natural materials and nature play (7 comments)

Preference for natural materials, sand, sensory/nature play, native planting, rocks; ensure the design matches the landscape and considers Connecting with Country.

"Natural materials, please!!!! Kids love playing in sand, under shade."

"More native planting and natural exploration/sensory area like big rocks to climb... Match landscape!"

Shade and tree protection (5 comments; "shade" 5; "trees/paperbark/melaleuca" 5)

Requests for more shade, keep existing paperbarks, prune don't remove, and use permeable paths to protect tree roots; advanced trees for future canopy.

"Please ensure there is more shade than there currently is."

"Do not remove any trees... permeable materials so nearby tree roots are protected."

"Melaleuca (paperbark)... long-lived, shady, good habitat."

Holistic and cohesive design (5 comments)

The space is seen as under-utilised and not cohesive across areas; calls for a more ambitious, holistic design.

"Proposed changes lack ambition and creativity."

"The whole space is not cohesive... fenced area, this area, flying fox area."

"Holistically building a play space that has capacity and is appropriate for its users."

Accessibility and inclusion (5 comments; "access/inclusive/wheelchair" 6)

Requests for Liberty swing/wheelchair access, safer baby swing design (enclosed rubber seat), and inclusive design features.

"Please install a liberty swing so people in a wheelchair can access the park."

"Add... features for both able bodies and disabled siblings so it's more inclusive."

"Canada... baby swings... rubber goes all the way around... safer."

Maintenance and refresh (5 comments)

Fix empty swing frames, broken bearings, remove debris (which stops carousel movement), and modernise old/clunky equipment.

"Please fix the swings asap. The empty frames are a waste of space."

"Whatever gets installed needs to be maintained so debris doesn't stop it moving."

"Current equipment is kinda old and clunky... General refresh will be great."

Seating/BBQ/picnic (4 comments)

Need more seating/picnic tables while keeping grass for informal picnics.

"Creating more seating in this area with picnic tables."

"Keep some grass for picnics as well."

Area 3

Area 3 includes the rope climbing structure, with proposed changes being to restore the ropes and introduce a new double bay 25m accessible flying fox.



Participants in the online survey and at the pop-up event were asked to indicate their level of support for the proposed changes, selecting from 'happy with the change', 'neutral/unsure', or 'unhappy with the change'. Area 3 received the highest level of support out of the options. Figure 5 below presents the percentage distribution of respondents' answers.

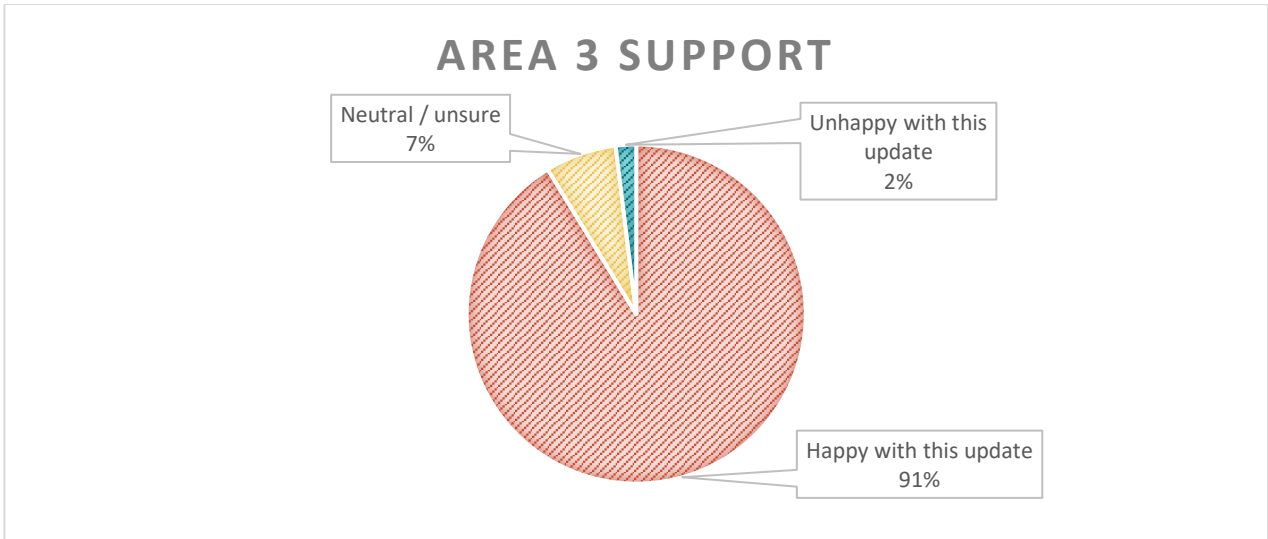


Figure 5: Support for proposed changes to Area 3 Source: Social map on Your Voice Our Coast, 10 November to 21 December, 103 responses

Respondents were asked to identify whether they are a parent, caregiver, youth worker, or an individual responsible for children, and to specify the age groups relevant to their survey response. The following summary presents the number of individuals who selected each age group, along with their respective levels of support for the proposed changes in Area 3.

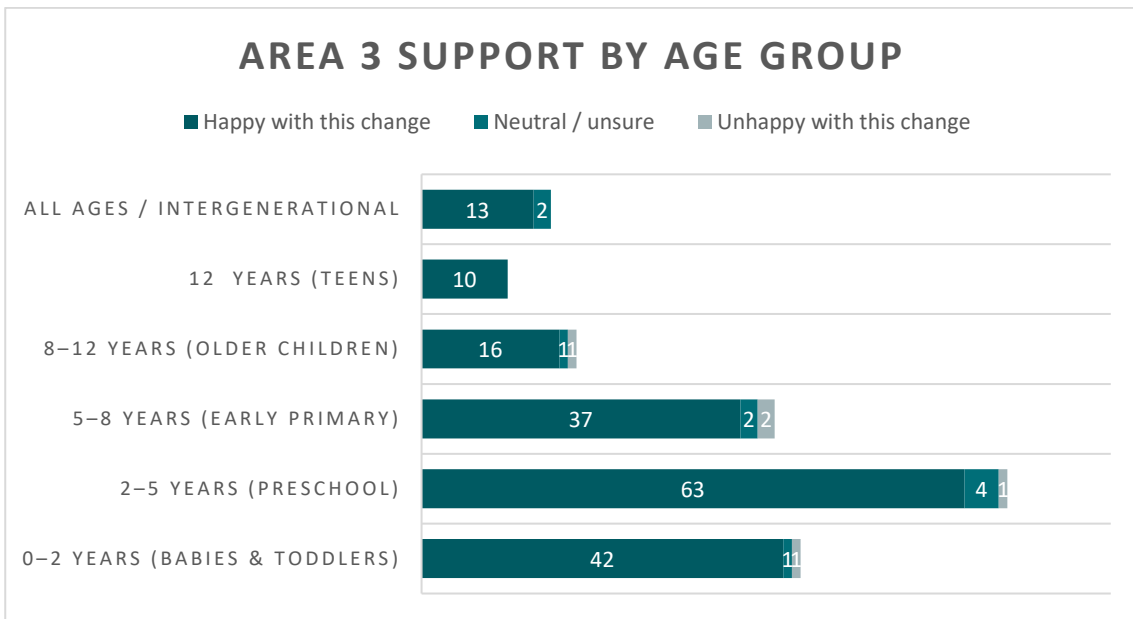


Figure 6: Support for proposed changes to Area 3 by age group Source: Social map on Your Voice Our Coast, 10 November to 21 December, 196 responses. Note: as respondents could select multiple age groups, totals exceed 103

The main themes of feedback regarding Area 3 are outlined below, accompanied by explanations and quotes gathered during the engagement process.

Shade and sun protection

Some respondents (n=6) emphasised the need for more shade, particularly over high-use equipment like the flying fox and climbing frames. Heat on equipment was a recurring concern.

"Can some more shade be incorporated? The flying fox equipment gets so hot in the direct sun."

"Shade required. No bark."

"Needs shade cloth over both flying Fox and climbing frame."

"More shade and seating please."

Flying fox popularity and suggestions

The flying fox is clearly a favourite feature, with frequent queues and high usage. Respondents (n=9) expressed their happiness with the inclusion of a flying fox, making it longer, and providing options for different age groups.

"What's better than one flying fox? 2 flying foxes!"

"The flying fox is probably the most used item in all the park area by all ages of kids. Make sure it is long!"

"Fantastic! Always a queue for this on busy park days."

"Perhaps there could be 2 sizes in the flying fox, a bigger one for the older kids and one for the smaller kids that still wanna have a go."

"That's awesome that the flying fox has a seat option!"

Surface material concerns

Some dissatisfaction with the current bark surface, described as messy, unsafe, and unhygienic (n=7). Suggestions include soft play surfaces or artificial grass.

"Great incentive. Can there be soft play instead of bark – very messy and dangerous to little kids choking on the bark."

"Get rid of the red bark."

"Get something other than filthy red bark, maybe a soft foot area beneath the tracks."

"Grassed area should be artificial grass, clean up the entire area."

Safety issues

Safety concerns were raised (n=5) about climbing structures being too high, risk of injuries, and speeding e-bikes/e-scooters near the play area. Softer landings and design adjustments were suggested.

"Children on e-bikes and e-scooters hoon through the bike/walkways that circle this space and my children have been very nearly mowed down, please consider this in your safety planning."

"It's unnecessarily big so could you make a big climb and a smaller climb for the younger children. It's also seriously dangerous. So many broken arms."

"The softer the landing you can make on those things the better – that end bit is brutal haha."

Additional features requested

Respondents (n=4) suggested adding amenities and play elements to enhance the space.

"Love the chair idea. We have been to a park with one of these and it is great for little ones too."

"Adding another slide to the spider web would be fantastic."

"Can we add public toilets between this and skatepark, and a cantilever basket swing in the vicinity too like the one at Ettalong foreshore?"

Materials and sustainability

There was a suggestion (n=1) to use hemp rope for durability and environmental benefits.

"How about using hemp rope. Used by sailors for centuries. Very strong and environmentally friendly. Doesn't get hot like plastic rope."

Area 4

Area 4 includes the junior play area, with proposed changes being to revitalise and expand the area with a pirate (nautical) theme.



Participants in the online survey and at the pop-up event were asked to indicate what features they would like to see in this area, with the ability to select multiple responses. The most popular features for this area were a 3-bay swing and a small multilevel play unit. Figure 7 below outlines how many votes each feature received for each option, from most popular to least popular.

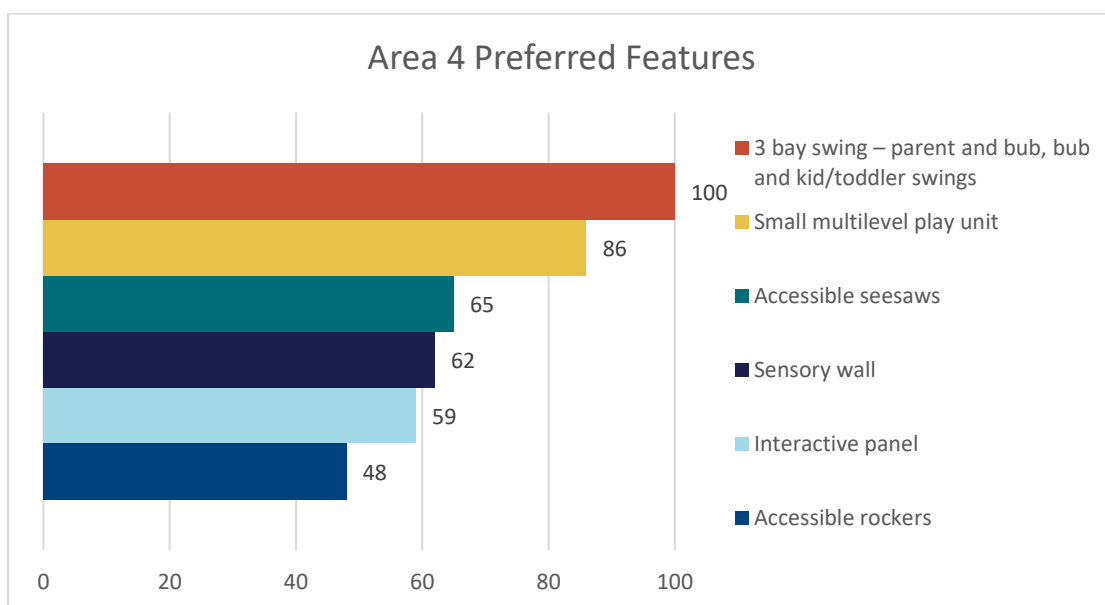


Figure 7: Preferred features for Area 4 Source: Social map on Your Voice Our Coast, 10 November to 21 December, 420 votes from 76 respondents

Respondents were asked to identify whether they are a parent, caregiver, youth worker, or an individual responsible for children, and to specify the age groups relevant to their survey response. The following summary presents the number of individuals who selected each age group.

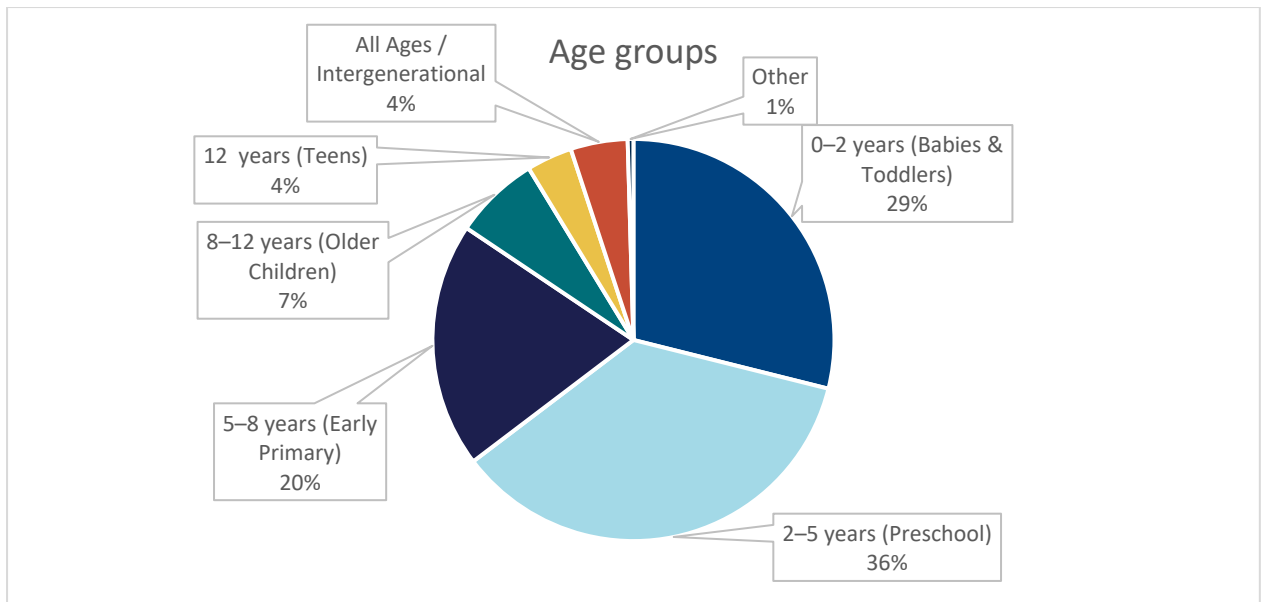


Figure 8: User age group of respondents for Area 4 Source: Social map on Your Voice Our Coast, 10 November to 21 December, 77 responses. Note: as respondents could select multiple age groups, totals exceed 77

The main themes of feedback regarding Area 4 included:

- Include double or accessible **slides** (n=18)
- More **swings** with variety (n=15)
- **Water play** and splash features (n=12)
- Improve or remove **sand/sandpit** (n=12)
- Secure and auto-close **fencing** and gates (n=11)
- **Toddler-friendly** and baby facilities (n=9)
- **Climbing** equipment (frames, nets, ropes, walls) (n=9)
- **Maintenance** and upkeep needed (n=8)
- Concern for safety hazards and fall height (n=7)
- Sound, music and **sensory play** (n=6)
- In-ground **trampolines** (n=5)
- Keep the **pirate** ship (n=5)
- **Accessible** and inclusive design (n=5)
- **Remove metal/concrete** elements (n=5)
- **Shade** and trees needed (n=4)
- **Nature play** and natural materials (n=3)
- **No bark** (n=3)

Council's Response

Theme	Council's response
Improve maintenance and cleanliness of area	<p>As part of the Umina PRP upgrade/renewal planning, we will review the site's current condition and supporting infrastructure (e.g., seating, bins, surfacing condition, and high-wear areas) and ensure ongoing maintenance requirements are considered as part of the final design. Council also undertakes regular inspections against relevant Australian Standards, with inspections noting accessibility and maintenance expectations for compliance</p> <p>In the short term, issues like litter, graffiti, damaged items or hazards can be reported to Council so they can be prioritised through operational maintenance pathways.</p>
Include water play features	<p>While water play is popular and has been raised through community feedback, Council will not be progressing with water play as part of the Umina PRP playspace upgrade due to the additional complexity and ongoing operational requirements associated with water play infrastructure (including treatment, compliance/auditing and higher maintenance demands).</p> <p>In addition, the playspace is located directly opposite the beach, which already provides a natural water-based recreation experience for the community.</p> <p>Instead, Council will focus investment on improving the quality and variety of play equipment and supporting infrastructure to enhance the overall playspace experience</p>
Increase number of swings and variety of type	<p>As part of the Umina PRP upgrade/renewal, Council will consider increasing both the number and variety of swings, balancing:</p> <ul style="list-style-type: none"> • different age groups (toddlers through older children), • inclusive swing options, and • safety clearances and layout requirements under the relevant Australian Standards. <p>This will be assessed during concept design so the final mix supports a range of play experiences — another consistent theme from wider playspace consultation.</p>
Increase accessible and inclusive play equipment	<p>For Umina PRP, Council will consider upgrades that support accessibility and inclusion, such as:</p> <ul style="list-style-type: none"> • continuous paths of travel to and within key play areas, • inclusive play elements and co-play experiences, and • a mix of active, sensory and creative play that supports different needs

What's Next?

Council is currently reviewing all feedback received and progressing with the design of the upgraded playspace. Final concept designs and the commencement of construction is anticipated for financial year 2026/27.

Stay up to date at: <https://www.yourvoiceourcoast.com/umina-regional-playspace-renewal>